

**BREST: EAST-WESTERN GATE**  
**A transport and logistics HUB for goods**  
**from and to CHINA**



Who we are .....	3
Organizational structure of the State Enterprise Belintertrans Ltd. ....	4
Solutions offered by BITG .....	5
Public Train operation from China to Europe via Dostyk or Erlian .....	6
Shipments China – Brest: Performance & Transit Time .....	7
“Brest East-Western Gate” – a transport and logistics HUB for goods from and to China ....	8
HUB Brest Container Terminal Sections .....	9
Europe Operator Intermodal .....	10
Shipments by wagon into the CIS .....	12
Monitoring system for block trains single containers .....	13
IT: Declaration & Document Management System .....	14
Imprint .....	15





# Who we are



## WE SIMPLY AIM TO IMPROVE THE STANDARD OF TRANSPORT AND SERVICE BETWEEN ASIA AND EUROPE

The Belintertrans-Germany GmbH (BITG) is a company of the Belarus Railway (BCh) state enterprise with offices in Friedrichsdorf near Frankfurt. It is incorporating with all state railway companies of the CIS, in particular with the Russian Railway RZD. BITG bundles the competence in logistics of BCh and RZD and also the know-how of European traditional multimodal forwarding companies like Rail Transportation Service Broker GmbH (RTSB), creating the premium conditions for constant container transportation service by rail between Germany, Russia and China.

**BELINTERTRANS-GERMANY GMBH – A BRANCH OF THE BELARUS RAILWAY**



100 % subsidiary



**Located in FRIEDRICHSDORF/GERMANY only 20 km from FRANKFURT**

## FROM CHINA TO GERMANY

Started in 2012 the BITG has been organizing whole block trains between China and Europe for well-known shipping companies. The main advantage is the reduced transit time compared to sea transport. The transit time is only 16-21 days, that is three times faster than by sea. While optimally consolidating regular container shipments west- and eastbound with fully loaded trains, we are able to reduce idle capacity costs to a minimum and thereby keep our freight rates stable. This gives you planning reliability in large long-term projects. We organize the delivery of your shipment from various loading places in Europe, CIS & China.

# Organizational structure of the State Enterprise Belintertrans Ltd.

## Belintertrans-Lietuva UAB

- Main focus of operation & services offered at Baltic Sea ports
- **Own freight payer code in Baltic countries)**
- Pre-carriage (multi-modal), mostly short-range transport from the North and Baltic Sea ports, handling and shipping of goods destination terminals in CIS, Mongolia and China, re-loading in broad gauge wagons
- Cargo/train consolidation incl. warehouse services, Customs clearance at the border with Russia
- Provision of EVRU, LVRU container

## Belintertrans Ltd. – Transport-Logistic Center in Belarus BTLC (state-owned)

- Founded on 2nd of March 2009 by the Belarusian Railway (BCh)
- Direct contracts with CFTO RZD "Russian Railways", Lithuanian, Latvian, Estonian and Kazakh Railways and close cooperation with the railway administrations of Ukraine and Poland

### Service profile:

- Operator and forwarding services; supply of railway equipment (containers, flat cars, freight cars, tank wagons)
- Terminal service in **Malaszewicze, Brest, Grodno, Gomel, Vitebsk and Kolyadichy** (transshipment, storage, temporary storage, customs warehousing, storage, rental)
- Customs procedures (export, import, transit), Cargo insurance

## Belintertrans-Moskau LLC – strategic positioning

### Main services:

- Shipments within Russia
- import-export and transit to/from neighbouring countries
- direct freight contract with the Russian Railways

## Belintertrans-Germany GmbH (BITG) in Friedrichsdorf

- wholly-owned subsidiary of Belarus Railways

### Core competencies:

- One of the leaders in providing All-In Service in intermodal rail shipments to and from CIS, Mongolia and China incl. supply of RW equipment (own rolling stock, containers)
- Customized rail logistics projects

## Belintertrans-China – strategic positioning

- Logistics service for shippers and forwarders and their goods within 1000 km from Zhengzhou, Wuhan, Chengdu
- Short-term supply of ISO container of all kinds in large quantities, delivery of containers by truck
- Document management (customs and accompanying documents)
- Logistics consulting and conception

- Headquarters
- Branch
- Agency

## Solutions offered by BITG



Train operator for shipments  
CHINA ↔ EUROPE



All Handlings in Border-Terminals:  
Brest, Mala, Dostyk



Intermodal rail shipments Europe  
↔ CIS / Mongolia / China



End-to-End Custom Clearance



Hub in Belarus can cover  
European countries and CIS-  
Countries



Hub Distribution by European  
Truck Network



Container Stock Management and  
Supply in Europe, CIS, China



Bonded Warehouses in China,  
Russia, Belarus and Europe



Repacking, light manufacturing,  
non-stop supply of transport  
equipment



Containers, Pallets or Boxes cargo  
shipments can be dispatched  
(Door to Door)



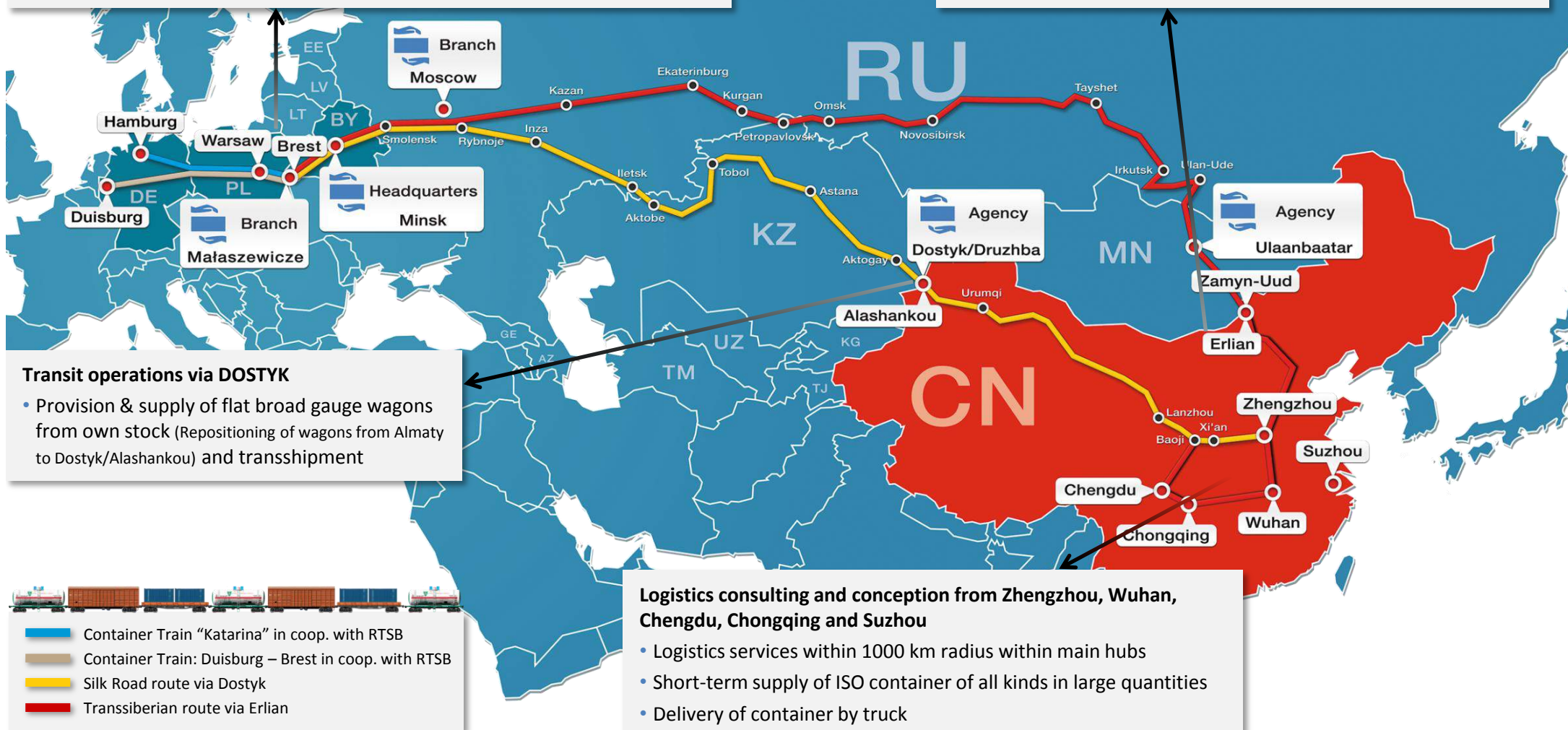
# Public Train operation from China to Europe via Dostyk or Erlian

## Synergies BIT-GER/RTSB

- pre-/on-carriage in Europe
- Shuttle trains from various European freight yards to Brest (lead time < 48hrs)
- Transshipment in both private and railway-owned wagons in Brest
- Europe-wide provision of ISO containers within 24 hours
- Export declarations, preparation of EX-1, T-1, creation of SMGS/CIM

## Transit operations via ERLIAN

- Provision & supply of flat broad gauge wagons from own stock (Repositioning from Ulaanbaatar to Erlian/Zamyn-Uud) and transshipment



# Shipments China – Brest: Performance & Transit Time

## Belintertrans-Germany solution:

### HUB Brest for international shipments with origin China

- Diverse departure terminals in China (Zhengzhou, Chongqing, Suzhou, Chengdu, Wuhan)
- Routing via Alashankou/Dostyk, Manzhouli/Zabaykalsk, Erenhot/Zamyn-Uude

## Transshipment in Brest:

- 24 hours for regular trains
- On-carriage to diverse destinations

## RUS/KZ/MN – Brest: Speed Train

- Consistent transit time of 7 days

## Services:

- Customs clearance in country of origin/destination
- Supply of containers, document handling, door-to-door delivery





# „Brest East-Western Gate“ – a transport and logistics HUB for goods from and to China



**Benefits HUB Brest** → effective transport and logistics hub  
Transit, transshipment and interchange services within the freight corridor: South-East Asia - China - Central Asia and Europe

## Connecting link:

- EU and its regulations (i.e. CIM) ↔ Eurasian Customs Union and its regulations (SMGS) eastbound ↔ westbound railway-traffic
- Normal gauge ↔ broad gauge wagons
- most significant reloading and gauge conversion station in Europe

## Overview of services and advantages:

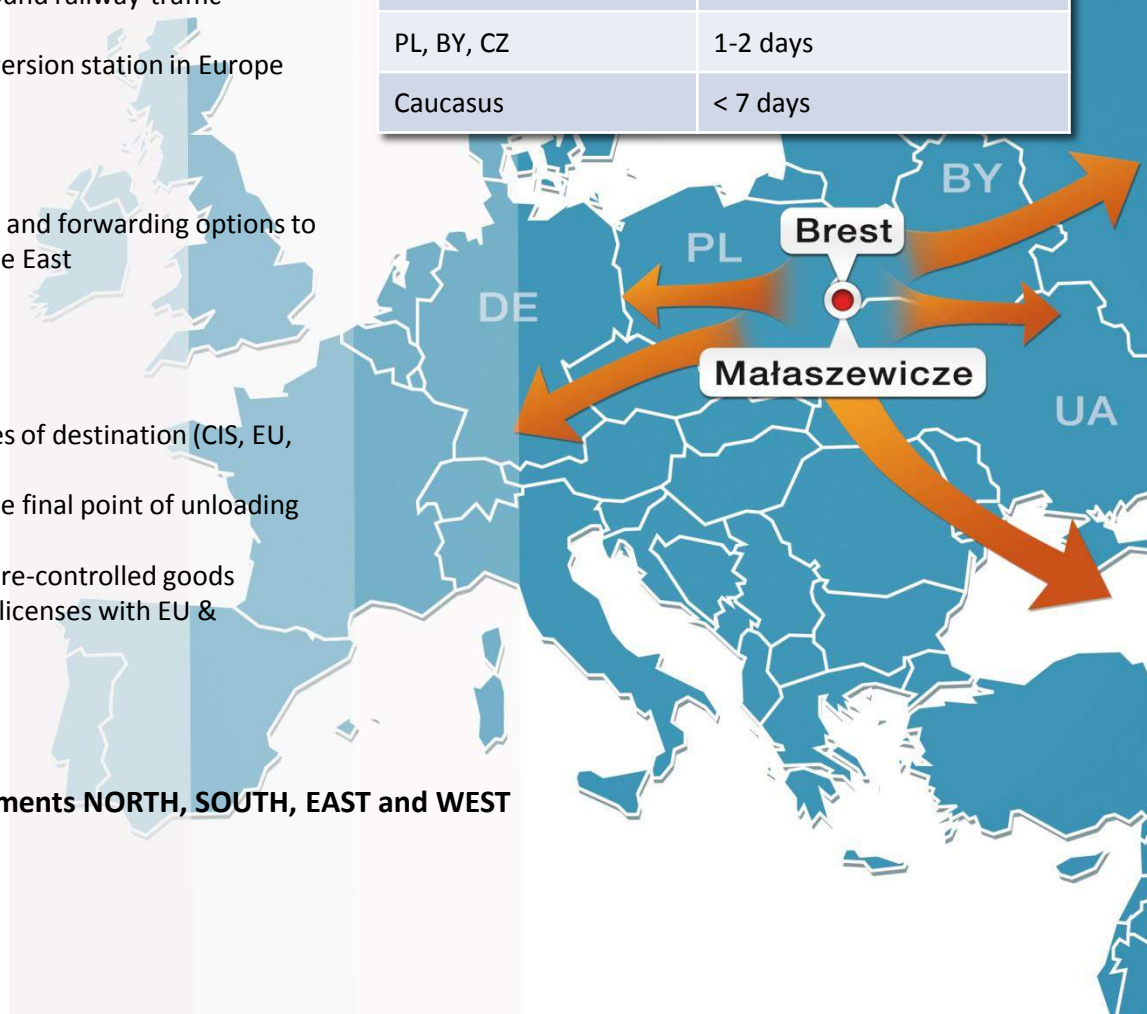
Regular rail traffic with fixed departure times and forwarding options to all railway terminals in Europe, CIS and Middle East

## The service package includes:

- Consolidation of cargo in Brest, BY
- Shunting services
- Reconsignment to diverse places/countries of destination (CIS, EU, Central Asia, Caucasian region)
- Multi-modal solutions to on-carriage to the final point of unloading (Link between rail, road and sea)
- Handling of dangerous goods / temperature-controlled goods
- Bonded warehouse services with bonded licenses with EU & Eurasian Union
- Custom Clearance Services

→ Strategic geographic position for shipments NORTH, SOUTH, EAST and WEST

Final Destination	Time of delivery from Brest
Hamburg/Duisburg	2 days
South/Northern Europe	4 days
Moscow	2 days
PL, BY, CZ	1-2 days
Caucasus	< 7 days





# HUB Brest Container Terminal Sections

Track number 9



The terminal Brest (where most of the transshipment operations are being done due the optimized infrastructure) is divided in 3 main parts: one section for transshipment of covered railroad cars, a section for open-top cars, and a container section.

## Detailed information to the container section:

### Track number 9 crane runway, 8520 m<sup>2</sup> in area

- Capacity 1435 gauge: 40 wagons
- Capacity 1520 gauge: 20 wagons
- Storage capacity 2 tiers: 80 (40ft)
- Processing capacity: 240 wagon with containers
- Availability of gantry cranes with a trestle span of 16 m: KK-6,3; KK-16/20; MKKS-42 (total: 3)
- Volume processed in 2013: 271,100 t.

Track number 19



### Track number 19

- Temporary storage warehouse (type A), 11,252.3 m<sup>2</sup> in area
- Length of track: 630 m
- Capacity 1435 gauge: 42 wagons
- Capacity 1520 gauge: 42 wagons
- Storage capacity 1 tier: 336 containers (40ft) or 672 containers (20ft)
- Storage capacity 2 tiers: 672 (40ft) or 1344 (20ft)
- Processing capacity of containers/day: 342
- Access ways for trucks

# Europe Operator Intermodal

As one of the largest container operators for Eurasian rail transportation, we are continuously developing, organizing and marketing our Europe-wide network for combined road-rail (FOT-FOR) mode of transportation.

Our two main railway products are currently the container trains with the routing from Hamburg or Duisburg to Brest (Belarus). Both trains run twice a week in the round-trip.

At the Gateway Brest there are forwarding options to all terminals in the CIS, Mongolia and China for transports in east direction.  
For West transports, the same applies for European freight stations.

It doesn't matter whether You would like to transport containers in a single or groupage shipment, or You do want us to create a concept of a block train with fixed departure times: Our qualified staff will meet every logistical challenge and work on each of your requests individually and with great care. You receive our transport offer promptly and guaranteed optimally „combined“.

## Handlings at the terminals:

### Eurokombi in Hamburg and RRT Rhein-Ruhr Terminal Duisburg and DIT

- Transshipment of the containers, which are delivered by truck or by antenna connections at the terminals
- Intermediate storage of containers if needed
- Marshalling and timetabled shipments of container trains to Brest



## Take advantage of our network – especially or transport over longer distances:

- with speed and moderate disposition schedule
- high performance with large quantitative transport volume
- smaller CO2 footprint, low energy consumption compared to sea shipments and pure truck transports
- high level of safety

## We would like to help You in the following matters:

- Creation of concept for Your transports (national & international)
- Logistics management for Your transport (Forwarding, Handling & Transport)

## ... and Operations:

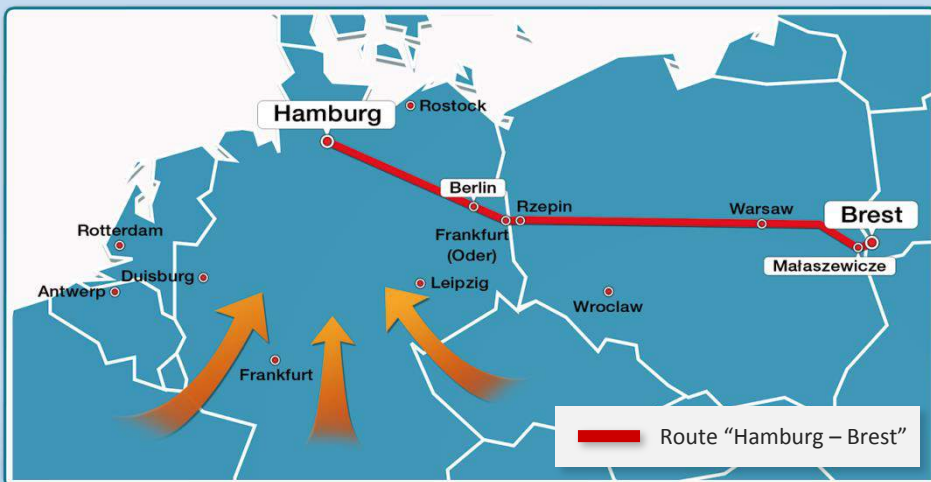
- Supply of rail cars & rail car maintenance
- Traction services (national & international)
- Shunting services
- Supply of personnel (drivers, shunters and wagon master)

## Agency for reexpedition Belintertrans-Mataszewicze in Poland (1435 - 1520)

- Reexpedition at the CIS/Brest, RWB/CIM, T1 issue
- Import, export and transit customs clearance (preliminary customs declaration)
- Provision of standard gauge wagons for round trips from Brest to Hamburg or Duisburg







- Closing for booking: Monday 12:00 p.m.
- Closing for delivery: Monday 16:00 p.m.
- DEPARTURE: Tuesday 11:00 a.m.
- ARRIVAL in Małaszewicze: Wednesday 03:00 a.m.
- Transshipment in Brest: Friday
- 41 x 40ft flat cars
- Length 578 m / max. tensile load 2,200 t / TEU 84
- Weekly Departures



- Closing for booking: Tuesday 12:00 p.m.
- Closing for delivery: Wednesday 16:00 p.m.
- DEPARTURE: Thursday 02:00 a.m.
- ARRIVAL in Małaszewicze: Friday 21:00 p.m.
- Transshipment in Brest: Sunday
- 41 x 40ft flat cars
- Length 578 m / max. tensile load 2,200 t / TEU 84
- Weekly Departures



#### Track Gauge Conversion in Brest:

**On behalf of the Belintertrans-Germany, the Belorussian Railways BCh transships containers from the standard gauge to broad gauge wagons in Brest**

- Handling of trains and single shipments (ISO-containers: 20, 30, 40 & 45 feet)
- capacity of several trains daily (regular and ad hoc)
- Provision of locomotives, traction, engine drivers and rolling stock
- Customs clearance for the entire economic area of the Eurasian Customs Union
- Short and long-term storage of containers
- Repair and cleaning of containers
- Non-stop operation



# Shipments by wagon into the CIS

Our core services do also include organization and planning of volume shipments of oversized or heavy goods, which are transported by us in broad gauge railway wagons.

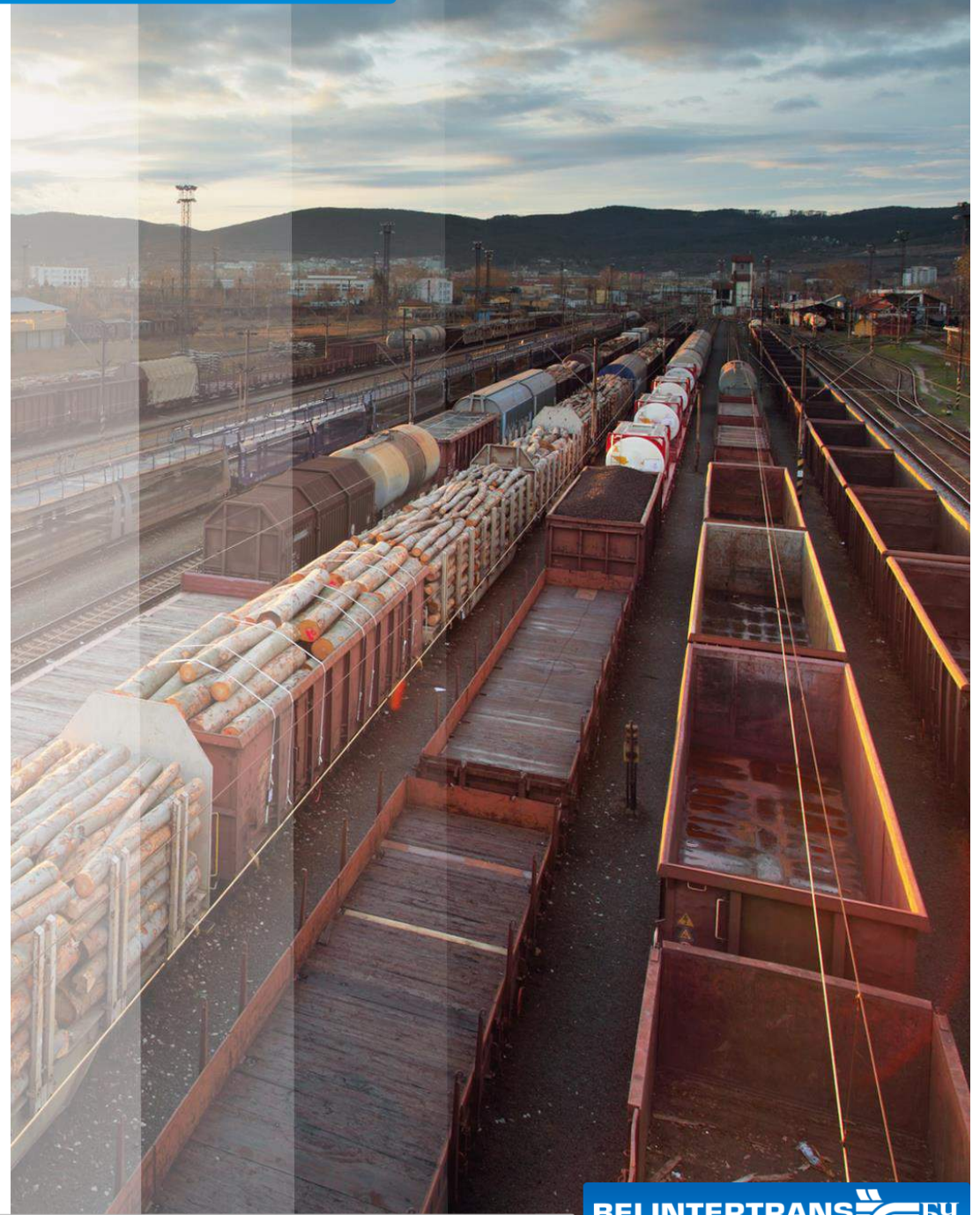
We arrange both the pre-carriage of the goods or delivery to the final destination by trucks and supervised reloading of the goods into provided freight wagons.

Depending on the type of goods and the place of loading, there is a selection of different routes with the transshipment either in Mukran, Brest, Chop, Vilnius or Riga.

The BELINTERTRANS has contracts with European railway transport companies and, as an official Russian freight forwarder, offers the best conditions on the entire Russian railway network. The years of experience and cooperation with the Russian Railways RŽD have evolved into a powerful connection in the east-west traffic. The trust in our company on the part of railways is particularly reflected, for example, in the short-term and permanent supply of private and railway-owned single wagon or wagon groups.

## Handling facilities and services:

- Handling of heavy lift and project cargo with crane
- Conventional handling of packaged and palletized goods
- Handling of chemicals/hazardous goods
- Reloading of packaged or palletized goods as well as project cargo
- Load securing and storage
- Customs procedures: import and export customs clearance
- Subsequent orders
- Creating of sketches/drawings by our own staff
- Close cooperation with the shipping lines
- Documentary procedure with pictures and videos





# Monitoring system for block trains single containers

https://www.belint.de/EN

## ClientOffice

Welcome to the ClientOffice of the company  
Belintertrans-Germany GmbH.

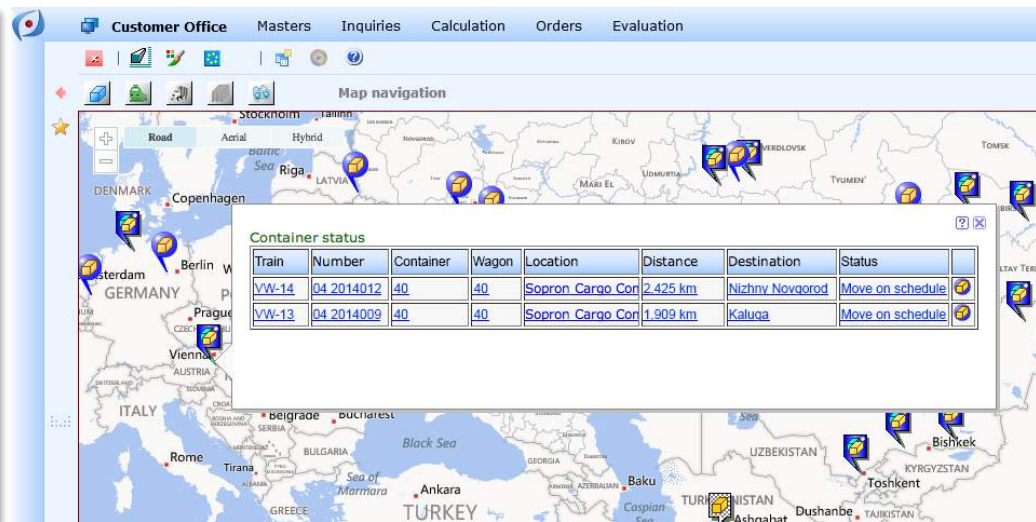
To log in, enter your customer ID and password and click Login.

Customer ID

Password

Login

[Web-based software myTransoffice](#)  
(c) by Transoffice GmbH 2007-2014



**BELINTERTRANS GERMANY**

Train Name: Zhengzhou train  
Train Number: ZZ 03 20140118  
Train Reference: Tracing 3rd Zhengzhou  
Departure Depot/Terminal: Dostyk (eksp.)  
Arrival Depot/Terminal: Hamburg Billwerder  
Departure Date / Time: 1.23.2014 / 10:00  
Date: 3.11.2014

Tracing Date/Time	Current Location	Distance travelled (km)	Distance last 24 hours (km)	Number of Containers
1.30.2014 / 21:40	Brest-Severny, BEL	4.109	511	52
1.29.2014 / 09:27	Orsha-Zentrainsys, BEL	3.598	1.168	52
1.28.2014 / 02:32	Ruzavka	2.430	484	52
1.27.2014 / 11:48	Körel	1.946	450	52
1.26.2014 / 13:55	Aktole KZH	1.496	711	52
1.25.2014 / 15:00	Aktole KZH	785	294	52
1.24.2014 / 11:06	Karaganda-Sortirovchnaya KZH	491	491	52

PDF Adobe Excel Word

myTransoffice

Current transport status

Train	Number	Container	Wagon	Location	Distance	Destination	Status
20166	11455	CDMU	119363-7	Mala-Brest	3	3/10/2014	A-6850 Dor Jekaterinburg 7803023/10/2014
20165	11454	EMJU	296719-0	Mala-Brest	3	3/6/2014	D-41379 Br KORSHUNOV 713100
20164	11449			Mala-Brest	3	3/6/2014	88457 Kird ULAN-BATOR 310005
20163	11448	EVUR	276659-7	Riga - Riga	3	3/7/2014	Kiptchak 7530043/3/2014
20162	11447	CDMU	613379-6	Mala-Brest	2	3/6/2014	D-88161 Li KOMSOMOLS 9601033/6/2014
20161	11446				2	3/11/2014	odensova
20160	11445				3	3/6/2014	Erzhausen
20159	11444	KKTU	726885-2	Mala-Brest	2	3/5/2014	14478 Post NAUSHKI EK19371073/5/2014
20158	11444	CSUU	431661-0	Mala-Brest	2	3/5/2014	14478 Post NAUSHKI EK19371073/5/2014
20157	11442	TALU	356263-7		2	3/3/2014	BEREZHEST (3483033/3/2014
20156	11442	TALU	356313-0		2	3/3/2014	BEREZHEST (3483033/3/2014
20155	11442	TALU	356273-0		2	3/3/2014	BEREZHEST (3483033/3/2014
20154	11442	TALU	356294-0		2	3/3/2014	BEREZHEST (3483033/3/2014
20153	11442	TALU	356308-4		2	3/3/2014	BEREZHEST (3483033/3/2014
20152	11442	TALU	356303-7		2	3/3/2014	BEREZHEST (3483033/3/2014
20151	11442	TALU	356156-4		2	3/3/2014	BEREZHEST (3483033/3/2014
20150	11442	TALU	356203-0		2	3/3/2014	BEREZHEST (3483033/3/2014
20149	11443	TALU	356253-4		2	3/3/2014	KIEV-LISKI 3210003/3/2014
20148	11443	TALU	356236-5		2	3/3/2014	KIEV-LISKI 3210003/3/2014
20147	11443	TALU	356310-3		2	3/3/2014	KIEV-LISKI 3210003/3/2014
20146	11443	TALU	356258-1		2	3/3/2014	KIEV-LISKI 3210003/3/2014
20145	11443	TALU	356212-8		2	3/3/2014	KIEV-LISKI 3210003/3/2014
20144	11441	HDMU	229761-0	Mala-Brest	0	3/4/2014	D-50354 Hi ALMA ATA 1 7000073/5/2014
20143	11440	ZIMU	255846-0	Riga - Riga	3	3/10/2014	5145 RL Wi BEZYMIANKA 6578033/10/2014
20142	11439				3	3/5/2014	Emmerich

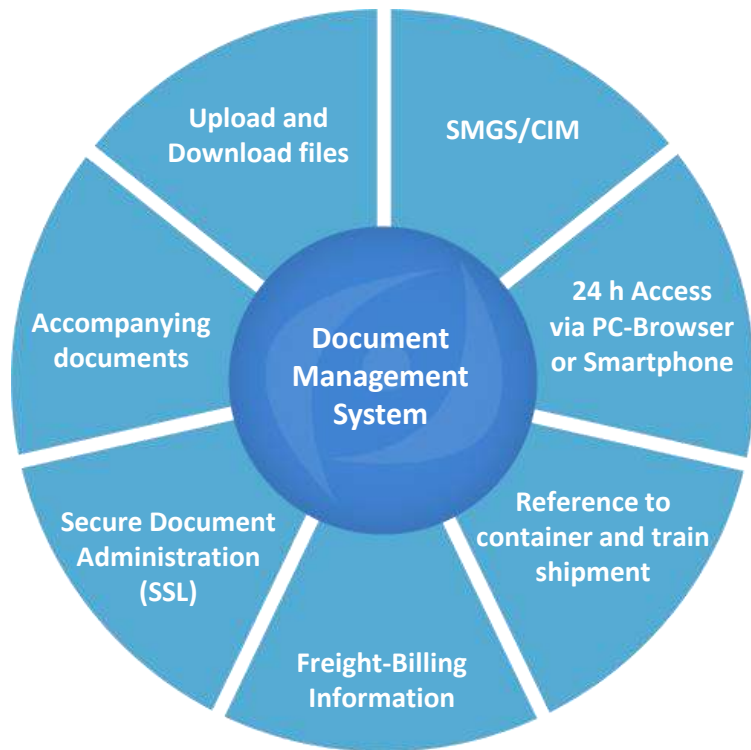
250 Elements of 5381 Page 1 of 22

## The features and benefits of our web-based application ClientOffice:

- Overview of the entire course of the route from the departure station to the destination station can be obtained online
- Update the position information in the system twice a day
- Graphical display of the wagon-position or container location on the map
- The reports can be exported in PDF, Excel and WORD format

## Availability of the tracking system:

- Accessible online 24 hours a day via internet browser
- Mobile access to the Internet tracking system via mobile phone (WAP) possible
- Daily & automatic e-mail sending on tracking reports at 7.30 am, CET



## The declaration & document management in a nutshell

Our document management system (DMS) is completely digital, all the way through the transportation. Every order consists of two elements: the transport means themselves and the information related to their shipment. This information, from pickup and transport to delivery and confirmation, is seamlessly in our DMS.

- Real-time access to documentation
- Authorized users get the access to supply record of shipping/warehouse receipts, bill of lading, Material Safety Data Sheets instantly, regardless of location
- All shipping documents are easy to upload and access through a single interface
- Reduction of document courier costs and e-mailing

The screenshot shows the "Documents" section of the DMS interface. At the top, it says "Client Office | Sample Customer International Ltd. | 12500 | 12500". Below this is a "Tracking" field with "Tracking ID" entered. The main table lists documents with columns: Order No., Order No., Order Description, Responsib. User, Currency, Date of Performance, Date of Value, Created on, Customers Order No., and Customer Reference. Below the table, it says "27 Elements of 27" and "Page 1 of 1".

Order No.	Order No.	Order Description	Responsib. User	Currency	Date of Performance	Date of Value	Created on	Customers Order No.	Customer Reference
13622	AU-0415/13622	Reference China WB4711	ab	EUR	04/02/2015	04/02/2015	04/02/2015	Reference China WB4711	Reference China
13146	AU-0115/13146		sb	EUR	01/14/2015	01/14/2015	01/14/2015		
11354	AU-0214/11354		ab	EUR	02/13/2014	02/13/2014	02/13/2014		
6440	AU-0112/06440		ig	EUR	01/06/2012	01/06/2012	01/06/2012		
6398	AU-0112/06398		ab	EUR	01/03/2012	01/03/2012	01/03/2012		

DMS Documents of 13622

Filename	Subcategory	Category	Type	Status	User (Uploader)	Uploaded Date	Status
dostyk.JPG	13622	Auftragsdaten	Common	Uploaded	12500	05/02/2015 13:03:51	



## Contact

Belintertrans-Germany GmbH  
Industriestr. 27  
61381 Friedrichsdorf / Germany

FON: +49 6172 / 98 19 18-0  
FAX: +49 6172 / 98 19 18-9  
EMAIL: [info@belint.de](mailto:info@belint.de)

General Manager: Mr. Artur Ballardt

[www.belint.de](http://www.belint.de)



*"The innovative web-based transport management system myTransoffice® has been a significant contributor to our continued growth and success."*



**BELINTERTRANS is a full member of the following associations:**

- International Federation of Freight Forwarders Associations FIATA
- Belarusian Association of International Freight Forwarders BAIF
- East West Transport Corridor II
- International Coordination Council for Transsiberian Transportation CCTT



**EAST WEST**  
TRANSPORT CORRIDOR II





BITG-EN-02052015